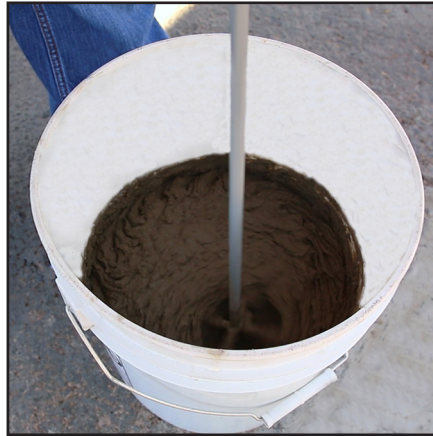




## THIN-SET INSTALLATION INSTRUCTIONS For Pedestrian and Curb Ramps



**Step 1:** Preparing The Site for installation



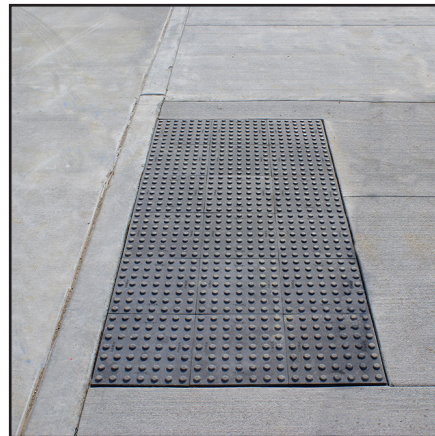
**Step 2:** Preparing the Dome-Tiles for installation



**Step 3:** Installing Thin-Set mortar into the substrate



**Step 4:** Installing Dome-Tile into Thin-Set mortar



Completed installation



# HIGH PERFORMANCE ADA DOMES

## Thin-Set Installation Instructions

**Background:** The following installation instructions are for Pedestrian and Curb Ramps.

Locate areas to receive TekWay® ADA Dome-Tiles. Determine layout of tiles and, if necessary, precut tiles prior to beginning the installation process using a concrete saw with a diamond blade. Before installing, ensure you have the following items on-site.

Tools	Materials
<ul style="list-style-type: none"><li>• Cordless drill and mixing paddle</li><li>• Notched trowel, (per Mapei)</li><li>• Non-marring rubber mallet</li><li>• Rubber Trowel</li></ul>	<ul style="list-style-type: none"><li>• Mapei Kerabond or Kerabond “T” dry set mortar (refer to Mapei recommendations)</li><li>• Keralastic latex additive from Mapei</li></ul>

### Step 1: Preparing the Site for installation:

- Verify the tile-bed substrate is a uniform depth that equals the thickness of the tiles plus the mortar.

**Note:** Measure the thickness of mortar depth and follow Mapei recommendations in determining the use of Kerabond or Kerabond “T”.

- Verify that the tile-bed finish has a concrete surface profile, (CSP) of 6.

### Step 2: Preparing the Dome-Tiles for install:

- Remove all dust and debris from back of the tiles and place near the installation area.
- Pour the Keralastic into a clean container and gradually add the correct amount of Kerabond mortar while slowly mixing, (approx. 300 rpm). Mix thoroughly until mixture is smooth. Let mixture stand “slake” for 10 minutes and then remix.

### Step 3: Installing Thin-Set mortar into the substrate:

- With pressure, apply a thin layer of mortar, by using the flat side of the trowel to the substrate.
- Apply additional mortar to substrate using the notched side of trowel, combing it in a single direction.



## HIGH PERFORMANCE ADA DOMES

**Note:** Ensures adhesion of the mortar to the tile-bed substrate.

**Note:** Spread as much mortar as can be tiled before the product skins over. “Open time” can vary with job-site conditions.

**Step 4:** Installing Dome-Tile into Thin-Set mortar:

- Apply mortar to the back of the first tile using the notched trowel.
- Place the tile firmly into the wet mortar.
- Push the tile back and forth in a direction perpendicular to the trowel lines to collapse the mortar ridges and to help achieve maximum coverage.
- Use a rubber mallet to work the tile down until the top surface between the domes is flush with the adjacent surfaces to provide a smooth transition.

**Note:** Remove excess mortar from tile and grout joints before installing next tile, using a sponge and clean water.

- Continue the process until completed.

**Note:** Ensure proper contact between the tile and substrate by periodically lifting a tile to check for acceptable coverage.

**Note:** After completing Installation of TekWay® ADA Dome-Tiles, protect the tiles from foot traffic for 24 hours and 7 days for heavy traffic.

**Note:** Mapei recommends mortar be used at temperatures between 40°F and 95°F. and to protect the installation from frost, rain and water immersion for 21 days.

**Following the above procedure will help to ensure 100% surface contact between the concrete and the Dome-Tiles. Substrate/Domes will become a monolithic structure.**

**Note:** If applicable, remove protective covering from the TekWay® ADA Dome–Tiles within 48 hours after completing the above steps.

**Warning: Sunlight damages the protective covering! The removal of this covering within 48 hours will ensure a quality/maintenance free installation.**





## HIGH PERFORMANCE ADA DOMES



### Additional Benefits Tekway® offers:

- Multiple colors, sizes, and configurations
- Tile specific shop Drawings
- Consulting for Layout/Design
- Dedicated Customer Service
- Custom-colors available
- On-site Installation Training Class available

Please call **1-866-439-3216** or email at **[csd@stronggo.com](mailto:csd@stronggo.com)**  
StrongGo® Industries, 3296 E. Hemisphere Loop, Tucson, Arizona, 85706

Visit our website at: **[www.stronggo.com](http://www.stronggo.com)** or scan QR Code

