



# HIGH PERFORMANCE DELINEATORS

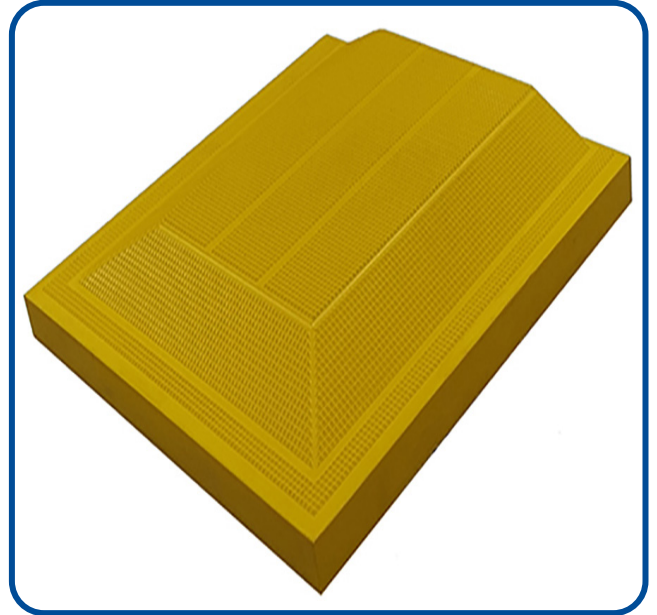
## TekWay® Delineator Tiles

An increasing number of City Planners across the United States are incorporating Separated Bicycle Lanes at sidewalk level.

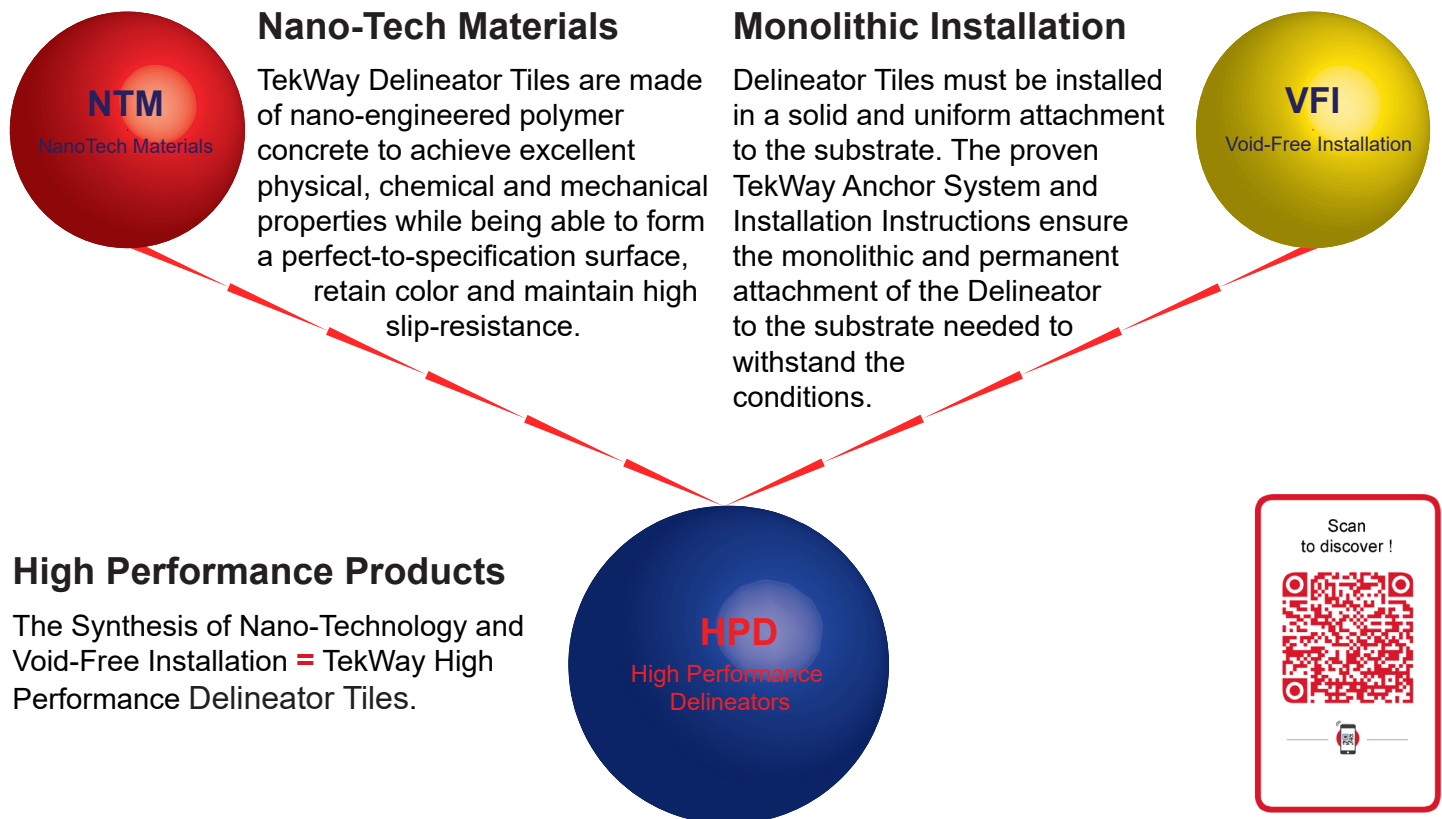
Trapezoid Delineator Tiles are designed and tested to safely separate the visually impaired pedestrians from cyclists on separated bicycle lanes at sidewalk level. These delineators are intended for areas such as city centers, parks and universities or any area where the two paths would be adjacent on the same level.

*Note:*

*Delineator Tiles should not be confused with Navigational Bar Tiles. Navigational Bar Tiles are only used as a way-finding device for the Visually Impaired.*



| CHALLENGE                       | INNOVATIONS  | OUTCOME                      | COMPLIANCE | SAFETY |
|---------------------------------|--|------------------------------|------------|--------|
| Heavy Foot and Wheel Traffic    | Nano-engineered polymer concrete                   | Durability & Performance     | ✓          | ✓      |
| Higher Vibration and Stresses   | TekWay Anchor System                               | Securely Anchored Tiles      | ✓          | ✓      |
| Design requires Cutting of Tile | Structural Fiber-Reinforcement throughout the Tile | Guaranteed Integrity of Tile | ✓          | ✓      |



### **CERTIFIED ASTM - TEST DATA**

| PHYSICAL PROPERTY    | TEST METHOD  | RESULTS    |
|----------------------|--------------|------------|
| Compression Strength | ASTM C 39-04 | >16,800psi |
| Water Absorption     | ASTM C 97    | <0.09 %    |
| Freeze / Thaw        | ASTM C 1262  | =0.00 %    |
| Slip Resistance      | ASTM C 1028  | Fa >0.85   |
| Flexural Strength    | ASTM C 947   | >3,000 psi |
| Tensile Strength     | ASTM C 496   | >3,000 psi |



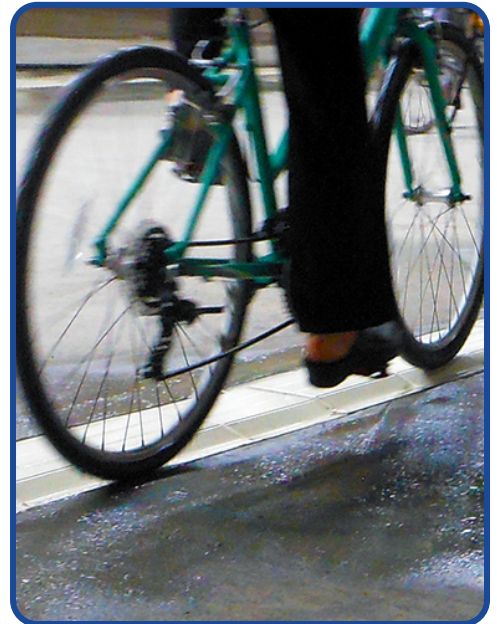
#### **Available Sizes in:**

**12" x 12"**

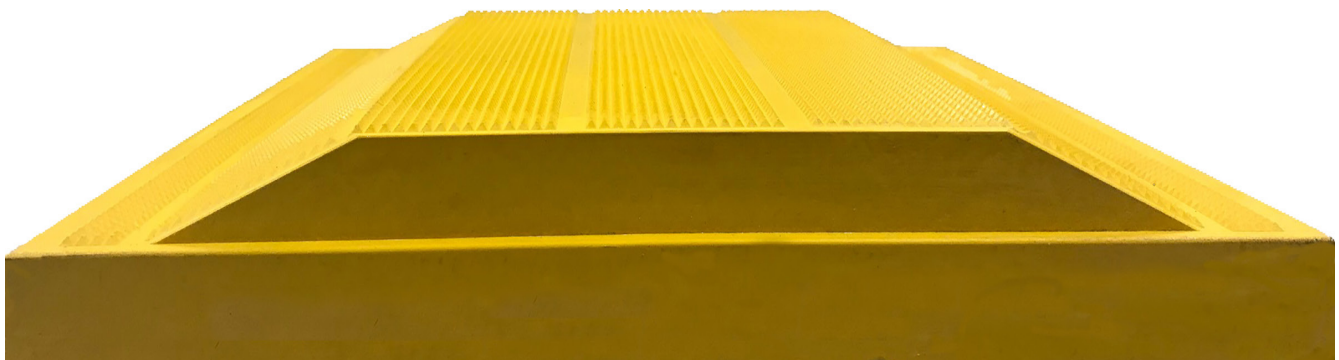
**12" x 48"**

#### **Available Colors in:**

- Natural Colors
- Federal Color Standard #595
- Custom Colors



Industry leading TekWay Delineator Tiles are long-lasting and reliable devices for separating the visually impaired pedestrians from cyclists on separated bicycle lanes at sidewalk level. They are fully detectable for those with low to no vision and do not impede safe movement for the mobility impaired.



TekWay Delineator Tile end view

Please call **1-866-439-3216** or email at **[csd@stronggo.com](mailto:csd@stronggo.com)**  
StrongGo® Industries, 3296 E. Hemisphere Loop, Tucson, Arizona, 85706

Visit our website at: **[www.stronggo.com](http://www.stronggo.com)** or scan QR Code



**Made in U.S.A. by StrongGo® Industries**